




# AX1800 Dual Band Wi-Fi 6 Router

Explore the New Era of Wi-Fi




Archer AX21

 Faster AX Wi-Fi  
Speed up to 1.8 Gbps<sup>†</sup>

 Connect More, Stay Fast  
OFDMA Supported

 1.5 GHz  
Powerful Processing

 WPA3  
Refined Security  
WPA3 Supported

# Highlights

## 802.11 AX<sup>+</sup> Upgrade Everything with Wi-Fi 6

The Archer AX21, based on the next generation 802.11ax Wi-Fi technology, takes your Wi-Fi to the next level while being backwards compatible with 802.11a/b/g/n/ac Wi-Fi standards.



### Next-Gen Wi-Fi Speeds

Enjoy a faster and more stable network for streaming and gaming with lower latency and speeds up to 1.8 Gbps using newer mobile devices.†



### Smooth Streaming

OFDMA allows clients to transmit both on uplink and downlink sharing one band at one time, which cuts the latency and jittering.‡



### Save Clients' Power

Target Wake Time helps mobile devices, especially IoT devices, consume less power during data transmission cycles to prolong battery life.‡



### Refined Security

The latest Wi-Fi security protocol, WPA3, keeps you safe by enhancing protection against brute-force attacks and reinforcing Wi-Fi password safety.\*

## 4× Larger Capacity for Non-Stop Entertainment§

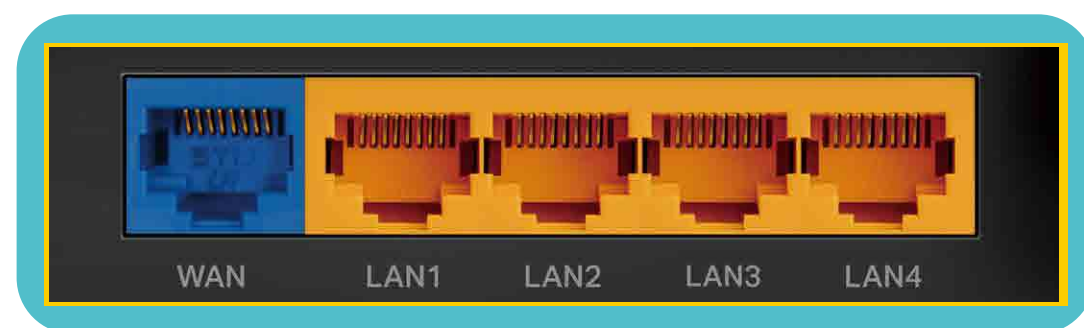
OFDMA and 4-Stream technology greatly improves network efficiency and capacity to connect more devices simultaneously, satisfying your diverse networking needs ranging from extremely low traffic to highly bandwidth intensive.



# Highlights

## Gigabit Internet Access

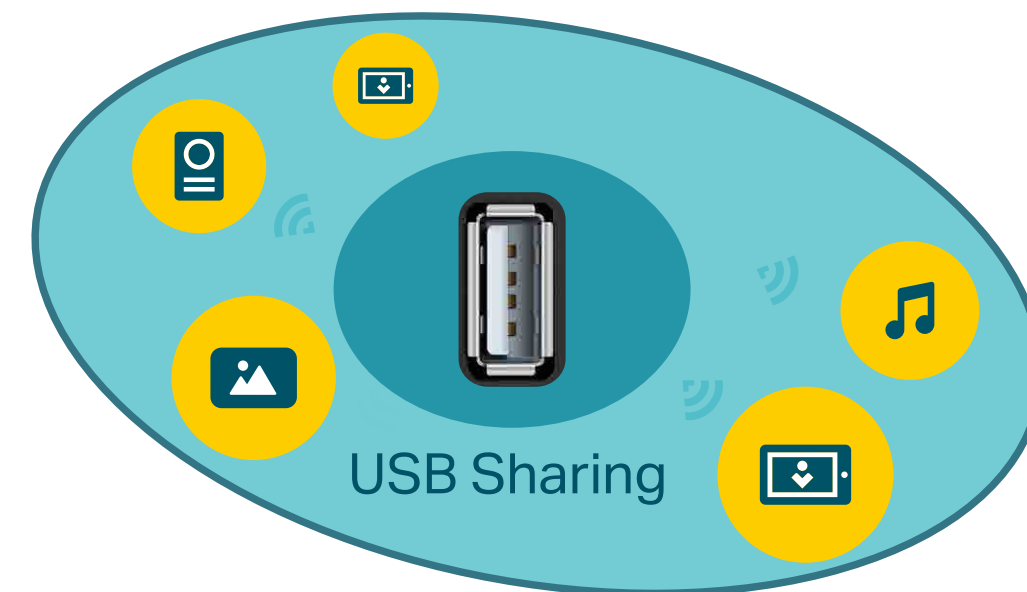
Take full advantage of your broadband with speed up to 1 Gbps with a Gigabit WAN port. Plug your PCs, smart TVs and game consoles into one of the four Gigabit LAN ports for fast and reliable wired connections.<sup>^</sup>



Gigabit Ports

## USB Media Sharing

Plug in your external drives to quickly share photos, movies, or music across your home network, or set up cloud backup storage. Cooperates with Guest Network to create a separate environment for private and safe sharing.



# Highlights

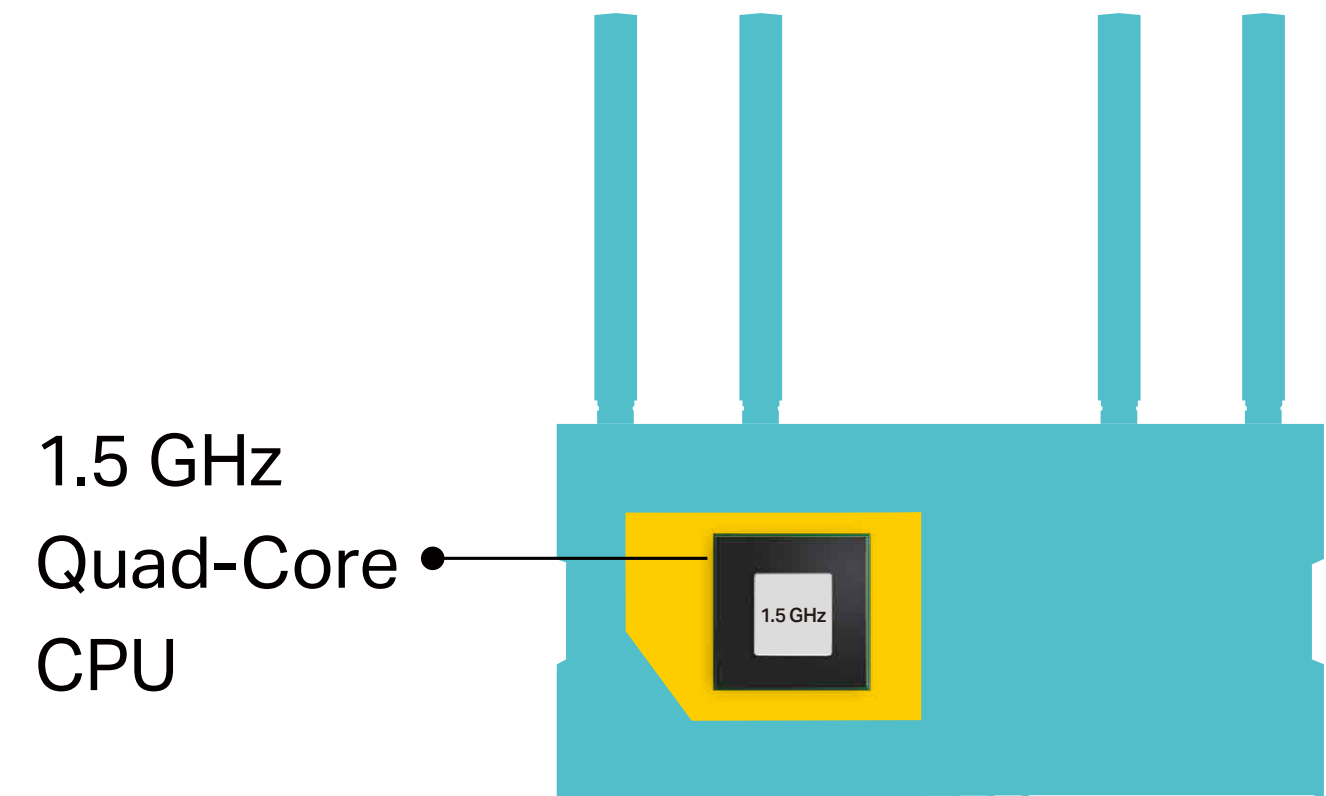
## Boosted Coverage

Four high-gain antennas and Beamforming transmit Wi-Fi signals to every corner of your home and concentrate signals strength towards connected devices. Wi-Fi 6 adjusts the bandwidth of sub-channels, making signals clearer and ensuring larger coverage.†



## Powerful Quad-Core CPU

A 1.5 GHz Quad-Core CPU provides the processing ability to handle enormous data throughput and minimizes the lag within your home network, giving you a smooth experience.

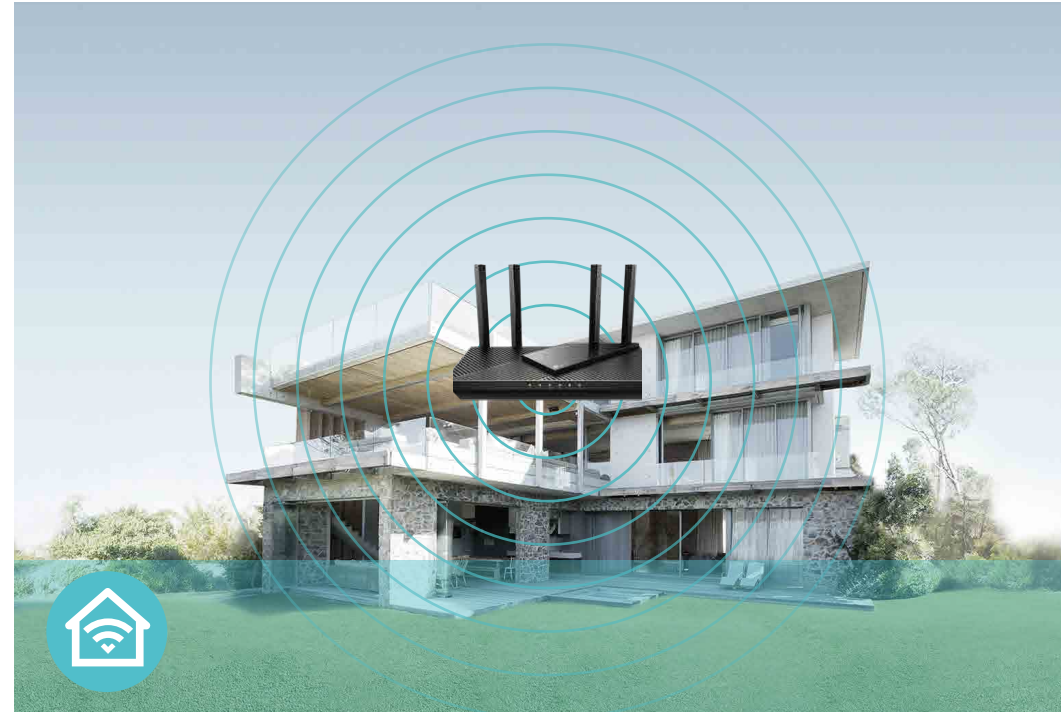


# Features



## Speed

- **Wi-Fi 6 Technology** – The new era of Wi-Fi with speeds up to 1.8 Gbps<sup>†</sup>
- **OFDMA** – Provides 4× greater capacity for more simultaneous connections.<sup>§</sup>
- **Next-Gen Wireless Speed** – 574 Mbps on 2.4 GHz (802.11ax) + 1201 Mbps on 5 GHz (802.11ax)<sup>†</sup>
- **1.5 GHz Quad-Core CPU** – Helps accelerate wired and wireless transmission simultaneously to keep your connections fast and uninterrupted.



## Wi-Fi Range

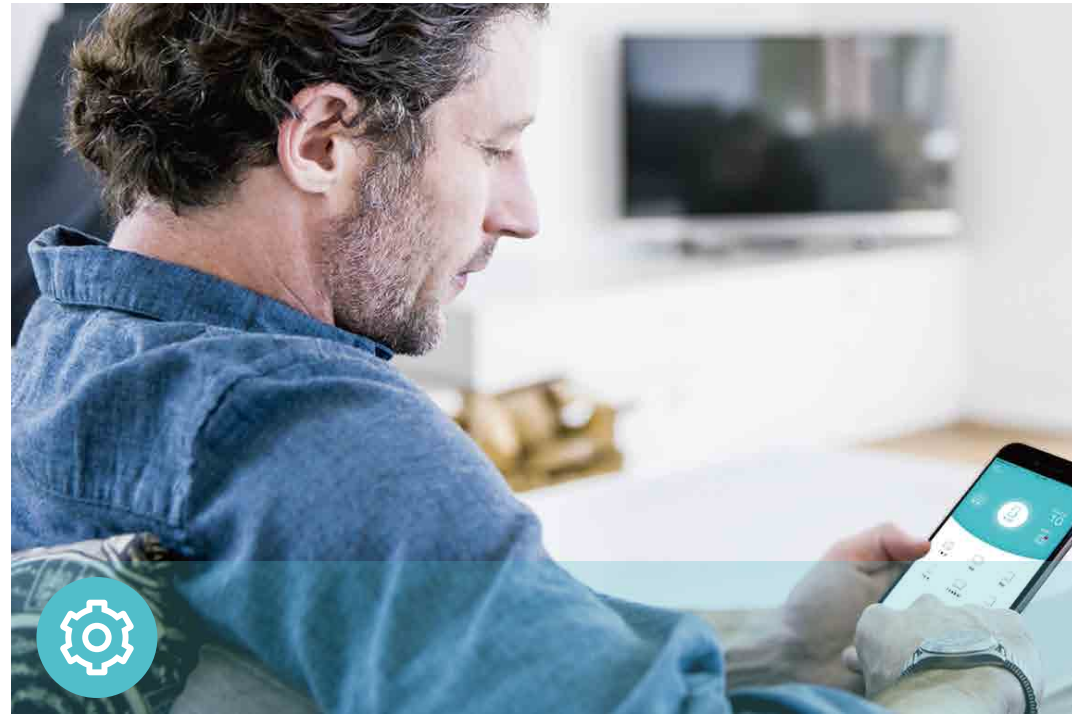
- **Ultimate Range Wi-Fi** – Four high-gain external antennas deliver a Wi-Fi signal to every corner of your home, making all of your connections more efficient and stable.
- **Beamforming Technology** – Concentrates Wi-Fi signals towards individual devices to ensure stronger connections



## Reliability

- **Secure VPN Access** – Connects to a private network with a safe and secure OpenVPN and PPTP VPN connection
- **Airtime Fairness** – Balances bandwidth of connected devices to improve overall throughput and efficiency
- **Smart Connect** – Intelligently switches each device's connection to the optimum available Wi-Fi band

# Features



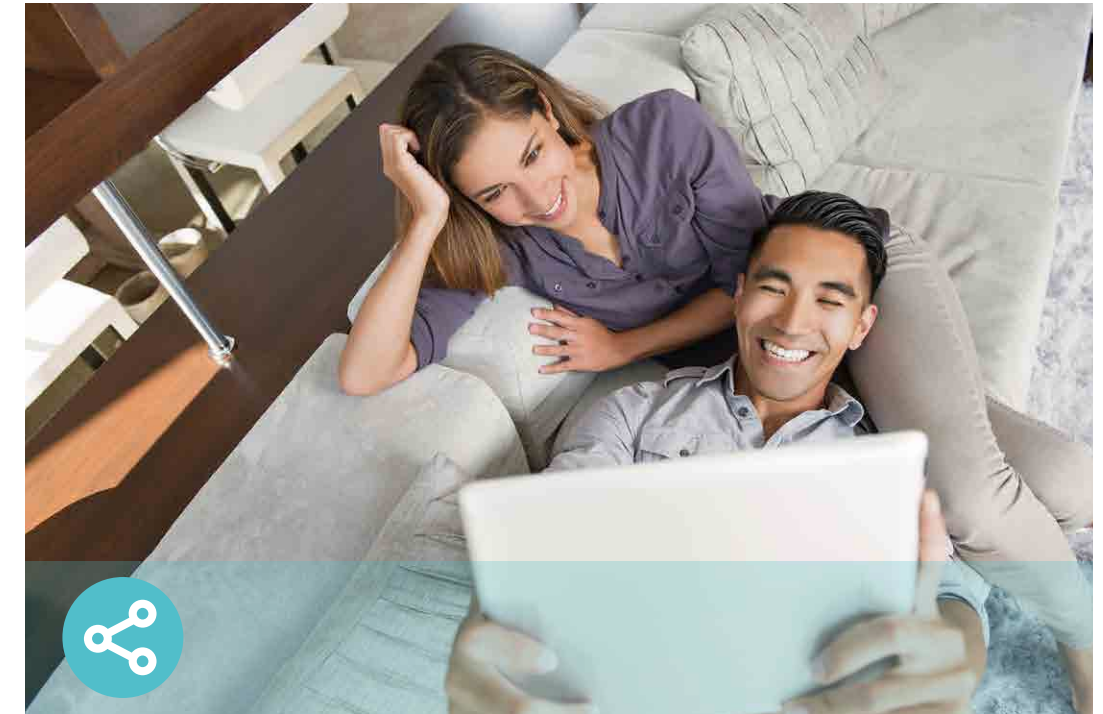
## Ease of Use

- Intuitive Web UI – Ensures quick and simple installation without hassle
- Fast Encryption – One-touch WPA wireless security encryption with the WPS button
- Easy On/Off – Turn on/off wireless radio using the Wi-Fi button.
- Power On/Off – Conveniently power on or off your router as required
- Hassle-free Management with Tether App – Network management is made easy with the TP-Link Tether app, available on any Android and iOS device



## Security

- Parental Controls – Manage when and how connected devices can access the internet
- Guest Network – Provides separate access for guests to secure the home network
- Access Control – Establishes a whitelist or blacklist to allow or restrict certain devices to access the internet
- Encryptions for Secure Network – WPA/WPA2-Personal, WPA2/WPA3-Personal, WPA/WPA2-Enterprise encryptions provide active protection against security threats



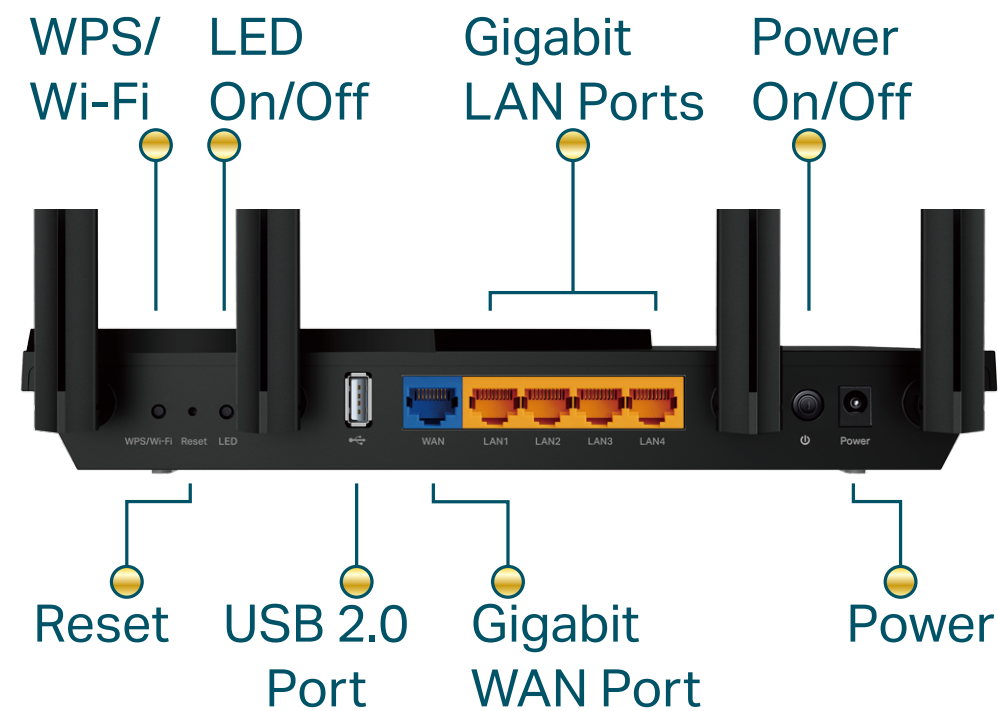
## Easy Sharing

- USB Port – Connects external storage devices to rapidly share files, photos, and videos
- Built-in Media Server – Allows you to play music, watch videos and view photos from any device on your network

# Specifications

## Hardware

- Ethernet Ports: One Gigabit WAN Port, four Gigabit LAN Ports
- USB Port: One USB 2.0 Port
- Buttons: WPS/Wi-Fi Button, Power On/Off Button, LED On/Off Button, Reset Button
- Antennas: Four External Antennas
- External Power Supply: 12V/1.5A
- Dimensions (W x D x H): 10.2 × 5.3 × 1.6 in (261.1 × 134.5 × 41 mm)



## Wireless

- Wireless: 1201 Mbps (5 GHz, 11ax) + 574 Mbps (2.4 GHz, 11ax), compatible with 11a/b/g/n/ac Wi-Fi standards
- Frequency: 2.4 GHz and 5 GHz
- Transmit Power:  
FCC:<30dBm(2.4 GHz & 5.15 GHz~5.825 GHz)
- Reception Sensitivity:  
5 GHz:  
11a 6Mbps:-97dBm, 11a 54Mbps:-79dBm  
11ac VHT20\_MCS0:-96dBm, 11ac VHT20\_MCS11:-66dBm  
11ac VHT40\_MCS0:-94dBm, 11ac VHT40\_MCS11:-63dBm  
11ac VHT80\_MCS0:-91dBm, 11ac VHT80\_MCS11:-60dBm  
11ax HE20\_MCS0:-95dBm, 11ax HE20\_MCS11:-63dBm  
11ax HE40\_MCS0:-92dBm, 11ax HE40\_MCS11:-60dBm  
11ax HE80\_MCS0:-89dBm, 11ax HE80\_MCS11:-58dBm  
2.4 GHz:  
11g 6Mbps:-97dBm  
11n HT20\_MCS0:-97dBm, 11n HT20\_MCS7:-78dBm  
11n HT40\_MCS0:-95dBm, 11n HT40\_MCS7:-75dBm  
11ac VHT20\_MCS0:-96dBm, 11ac VHT20\_MCS11:-67dBm  
11ac VHT40\_MCS0:-94dBm, 11ac VHT40\_MCS11:-64dBm  
11ax HE20\_MCS0:-96dBm, 11ax HE20\_MCS11:-64dBm  
11ax HE40\_MCS0:-93dBm, 11ax HE40\_MCS11:-61dBm
- Wireless Function: Enable/Disable Wireless Radio, WMM, Wireless Statistics
- Wireless Security: WPA/WPA2-Personal, WPA2/WPA3-Personal, WPA/WPA2-Enterprise

# Specifications

## Software

- Quality of Service: Device Prioritisation
- WAN Type: Dynamic IP/Static IP/PPPoE/PPTP(Dual Access)/L2TP(Dual Access)
- Management: Access Control, Local Management, Remote Management
- DHCP: Server, DHCP Client List, Address Reservation
- NAT Forwarding: Port Forwarding, Port Triggering, UPnP, DMZ
- Dynamic DNS: DynDns, NO-IP, TP-Link
- Access Control: Parental Controls, Local Management Control, Host List, White List, Black List
- Firewall Security: SPI Firewall, IP and MAC Address Binding
- Protocols: IPv4, IPv6
- USB Sharing: Supports Samba(Storage)/FTP Server/Media Server
- Guest Network: 2.4 GHz Guest Network, 5 GHz Guest Network
- VPN Server: OpenVPN, PPTP VPN

## Others

- Certification:  
FCC, CE, RoHS
- System Requirements:  
Microsoft Windows 98SE/NT/2000/XP/Vista™/7/8/8.1/10, MAC OS, NetWare, UNIX or Linux  
  
Internet Explorer 11, Firefox 12.0, Chrome 20.0, Safari 4.0, or other Java-enabled browser  
  
Cable or DSL Modem  
  
Subscription with an internet service provider (for internet access)
- Environment:  
Operating Temperature: 0°C~40°C (32°F ~104°F)  
Operating Humidity: 10%~90% non-condensing
- Package Contents  
Wireless Router Archer AX21  
Power Adapter  
RJ45 Ethernet Cable  
Quick Installation Guide



For more information, please visit

<http://www.tp-link.com/products/details/Archer-AX21.html>

or scan the QR code left

Attention: This device may only be used indoors in all EU member states and EFTA countries.

This device complies with part 15 of the FCC Rules. Operation is subject to the following two conditions: (1) This device may not cause harmful interference, and (2) this device must accept any interference received, including interference that may cause undesired operation. Specifications are subject to change without notice.

<sup>†</sup>Maximum wireless signal rates are the physical rates derived from IEEE Standard 802.11 specifications. Actual wireless data throughput, wireless coverage and number of connected devices are not guaranteed and will vary as a result of network conditions, client limitations, and environmental factors, including building materials, obstacles, volume and density of traffic, and client location.

<sup>‡</sup>Use of 802.11ax (Wi-Fi 6), and features including OFDMA, 1024-QAM and BSS Color requires clients to also support those features.

<sup>§</sup>4x average throughput refers to 4x increase in median throughput under dense environment (i.e. 8+ Wi-Fi 6 devices connected with combined speeds not higher than ISP offers) compared to a 2x2 11ac wave 2 router.

<sup>^</sup>1,000 Mbps internet speeds require compatible service plans and equipment

©2020 TP-Link.